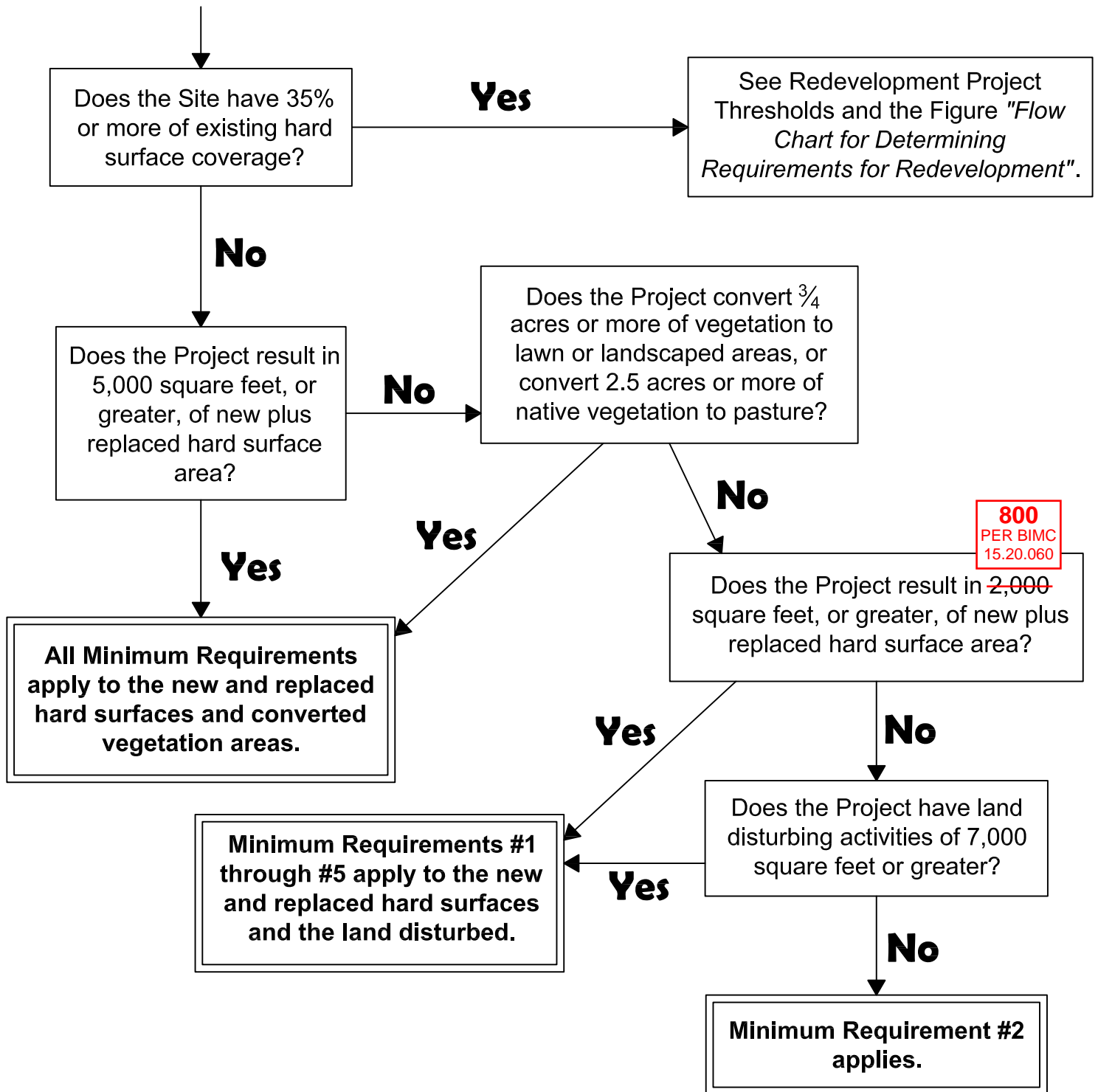


Start Here



DEPARTMENT OF
ECOLOGY
State of Washington

Flow Chart for Determining Requirements for New Development

Revised March 2019

Please see <http://www.ecy.wa.gov/copyright.html> for copyright notice including permissions, limitation of liability, and disclaimer.

Does the Project result in ~~2,000~~ square feet, or more, of new plus replaced hard surface area?
OR
Does the land disturbing activity total 7,000 square feet or greater?

Yes

No

Minimum Requirements #1 through #5 apply to the new and replaced hard surfaces and the land disturbed.

Minimum Requirement #2 applies.

Next Question

Does the Project add 5,000 square feet or more of new hard surfaces?
OR
Convert 3/4 acres or more of vegetation to lawn or landscaped areas?
OR
Convert 2.5 acres or more of native vegetation to pasture?

Yes

No

All Minimum Requirements apply to the new hard surfaces and the converted vegetation areas.

Next Question

Is this a road related project?

No

Yes

Does the Project add 5,000 square feet or more of new hard surfaces?

Yes

No

Do the new hard surfaces add 50% or more to the existing hard surfaces within the Site?

No

No

No additional requirements.

Is the total of new plus replaced hard surfaces 5,000 square feet or more,
AND
does the value of the proposed improvements - including interior improvements - exceed 50% of the assessed value (or replacement value) of the:

- existing Project Site improvements (for commercial or industrial projects) OR
- existing Site improvements (for all other projects)

Yes

Yes

All Minimum Requirements apply to the new and replaced hard surfaces and converted vegetation areas.



Flow Chart for Determining Requirements for Redevelopment

Revised March 2019