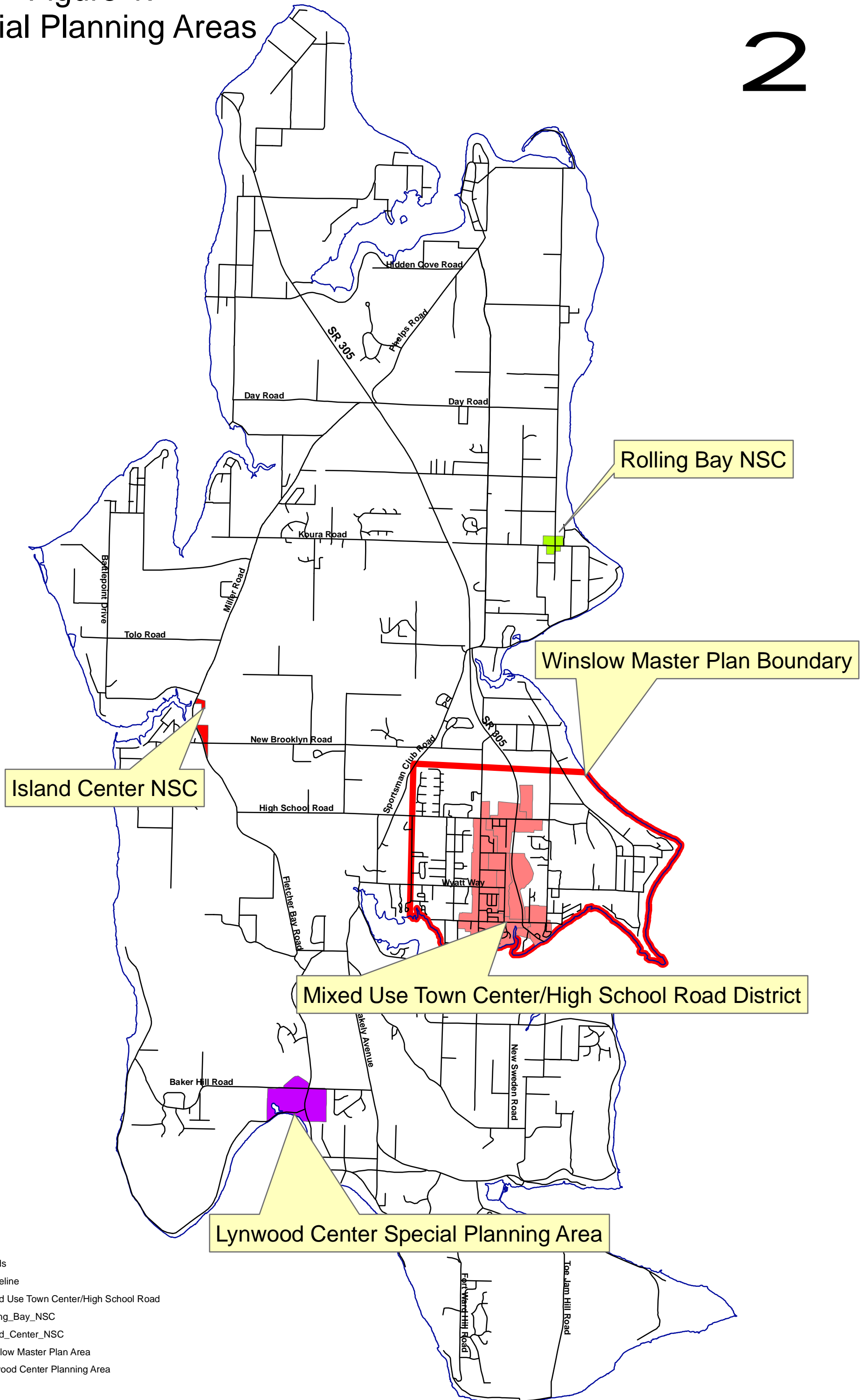


Figure 1:
Special Planning Areas



- Legend**
- Roads
 - Shoreline
 - Mixed Use Town Center/High School Road
 - Rolling_Bay_NSC
 - Island_Center_NSC
 - Winslow Master Plan Area
 - Lynwood Center Planning Area

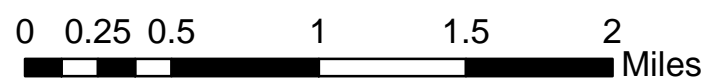
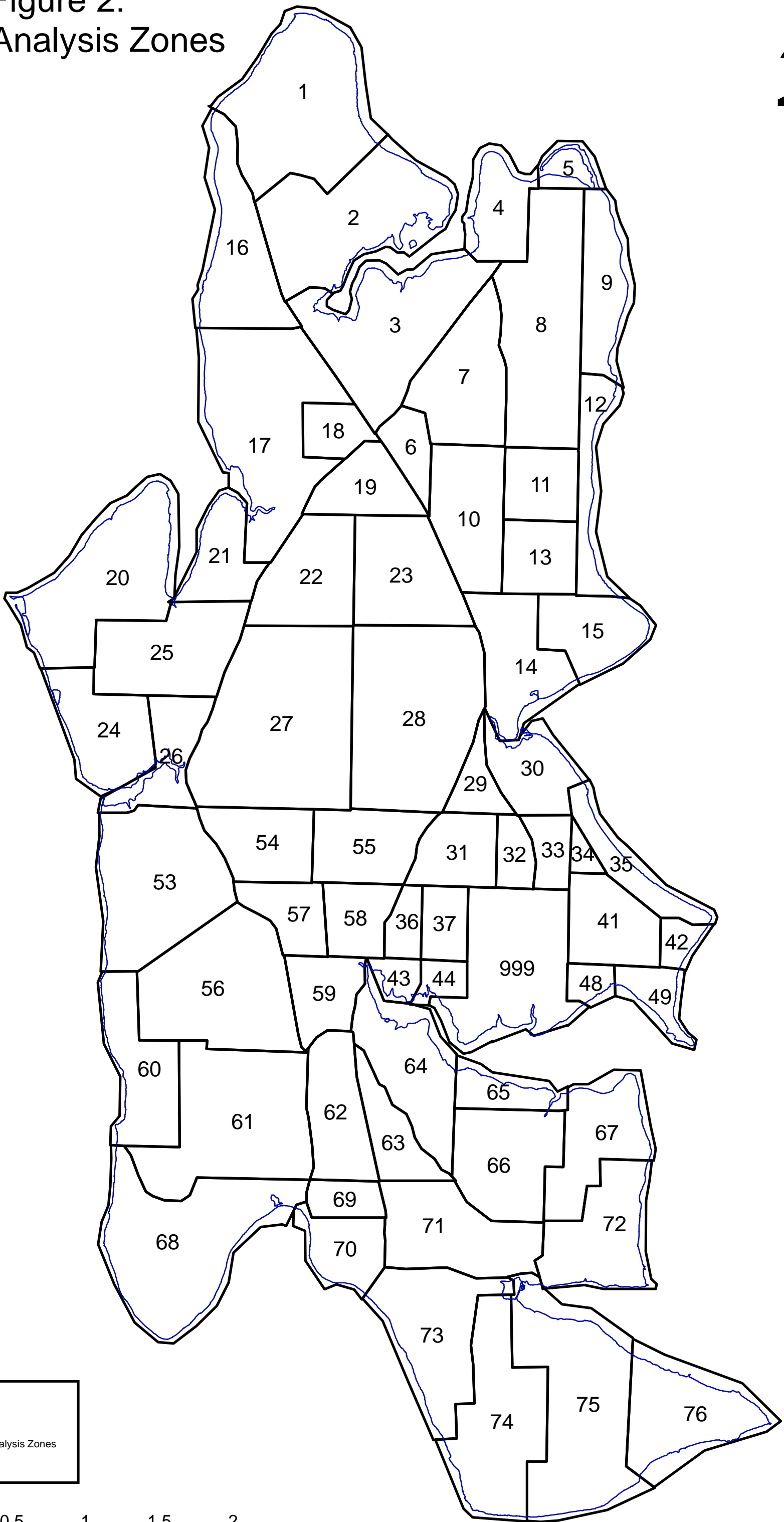


Figure 2:
Traffic Analysis Zones



Legend
— Shoreline
□ Traffic Analysis Zones
68 = TAZ#

0 0.25 0.5 1 1.5 2 Miles

Figure 3:
Population Distribution by
Traffic Analysis Zone (TAZ)

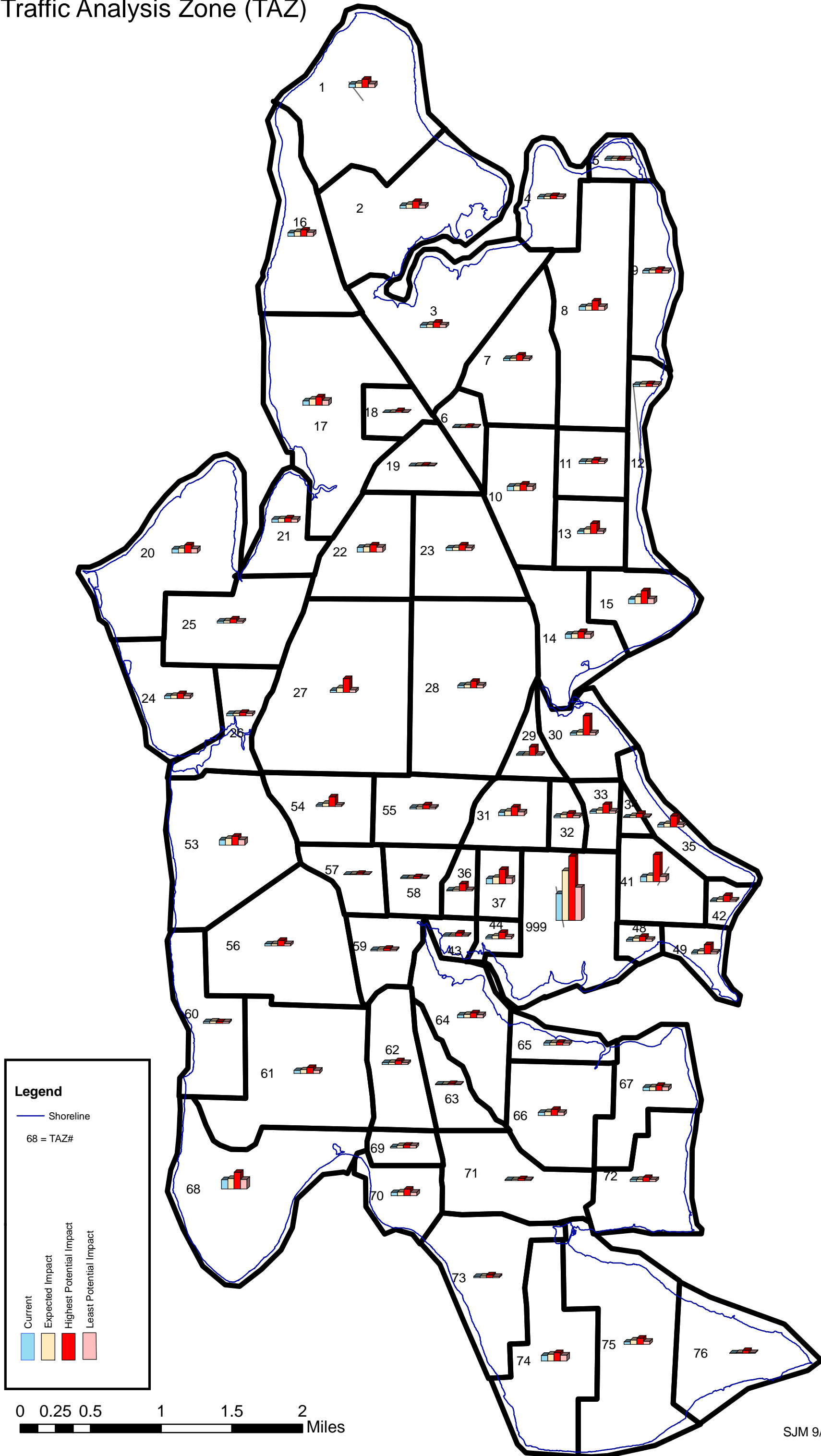
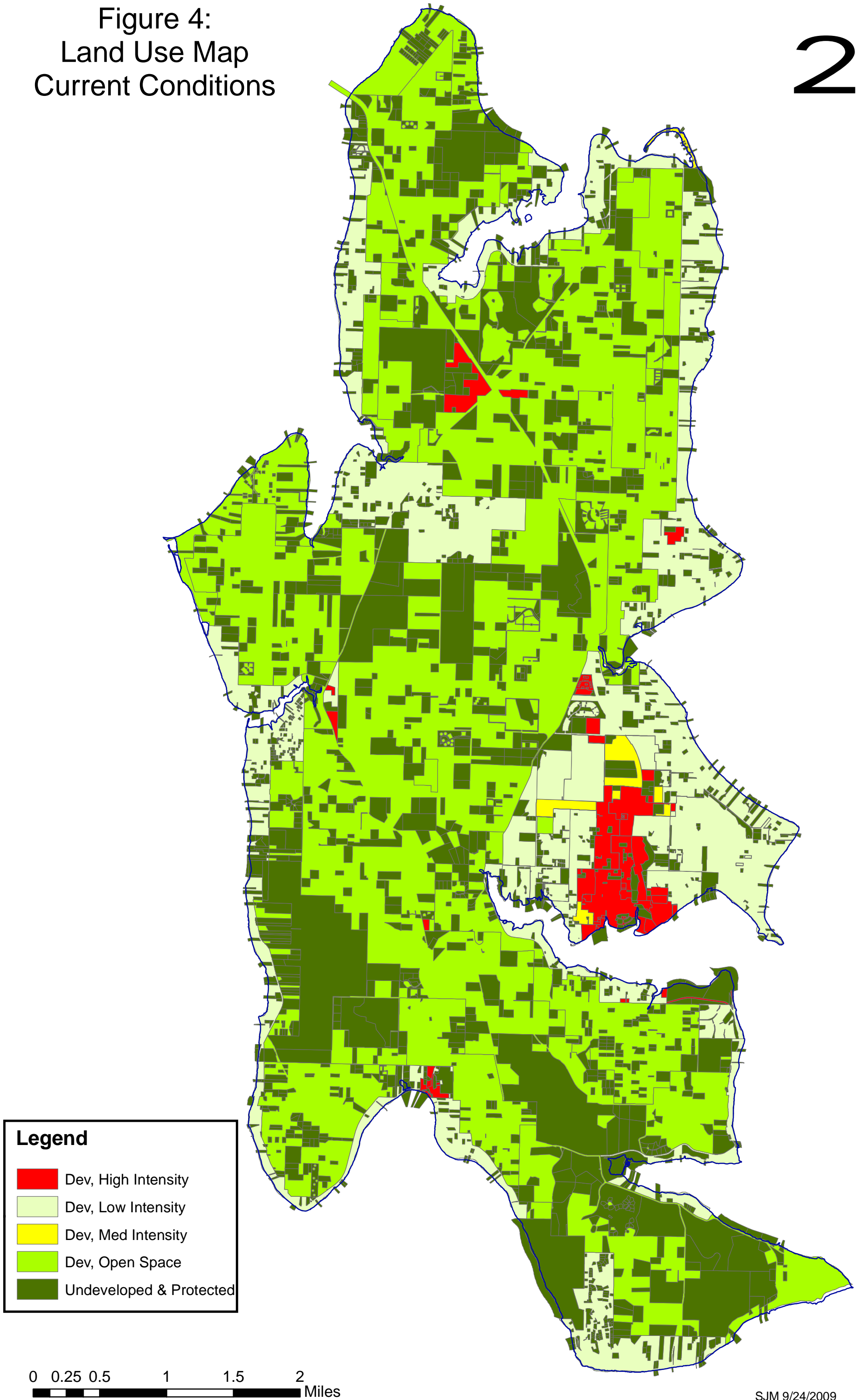


Figure 4:
Land Use Map
Current Conditions

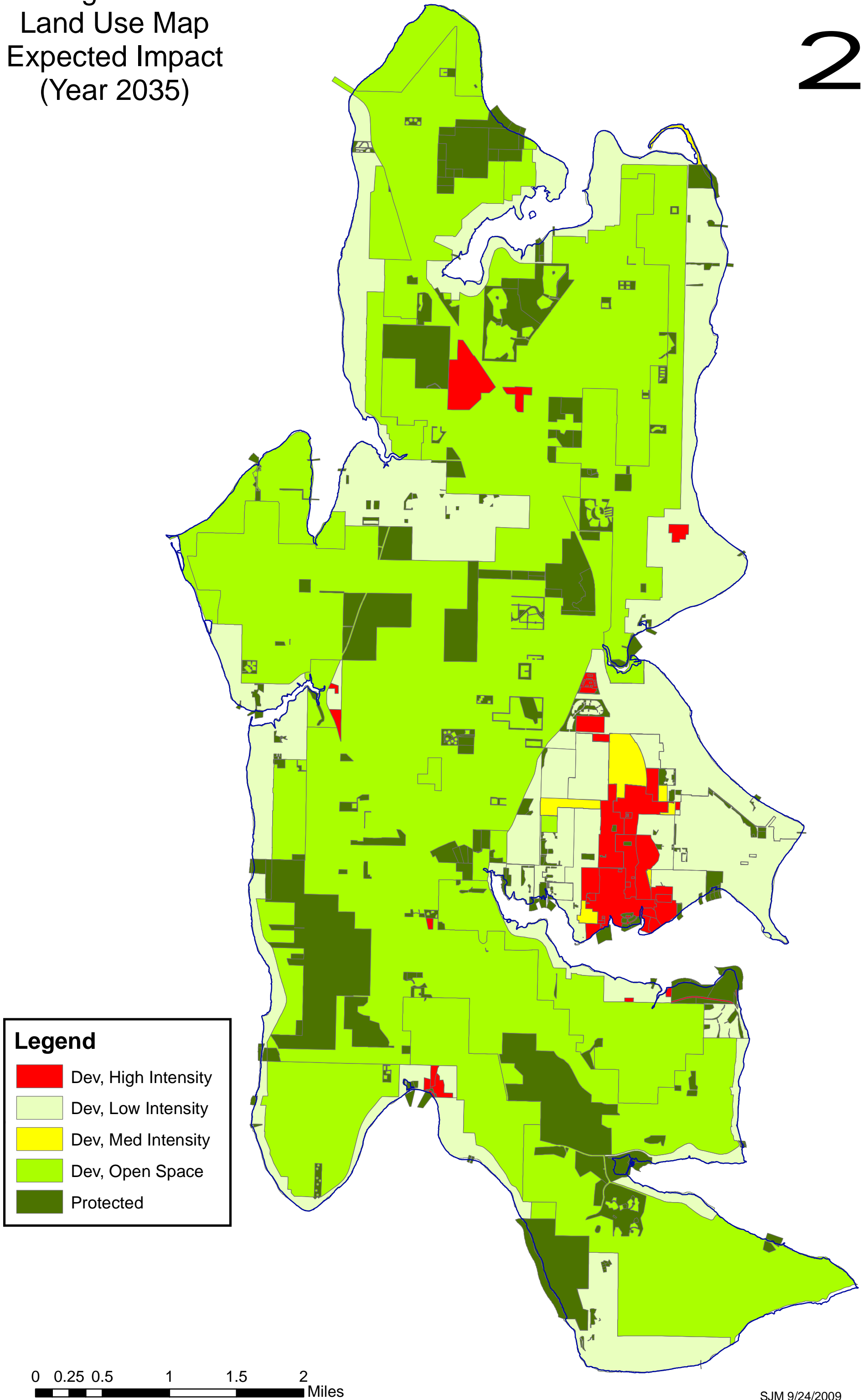


Legend

- Dev, High Intensity
- Dev, Low Intensity
- Dev, Med Intensity
- Dev, Open Space
- Undeveloped & Protected

0 0.25 0.5 1 1.5 2 Miles

Figure 5:
Land Use Map
Expected Impact
(Year 2035)



Legend

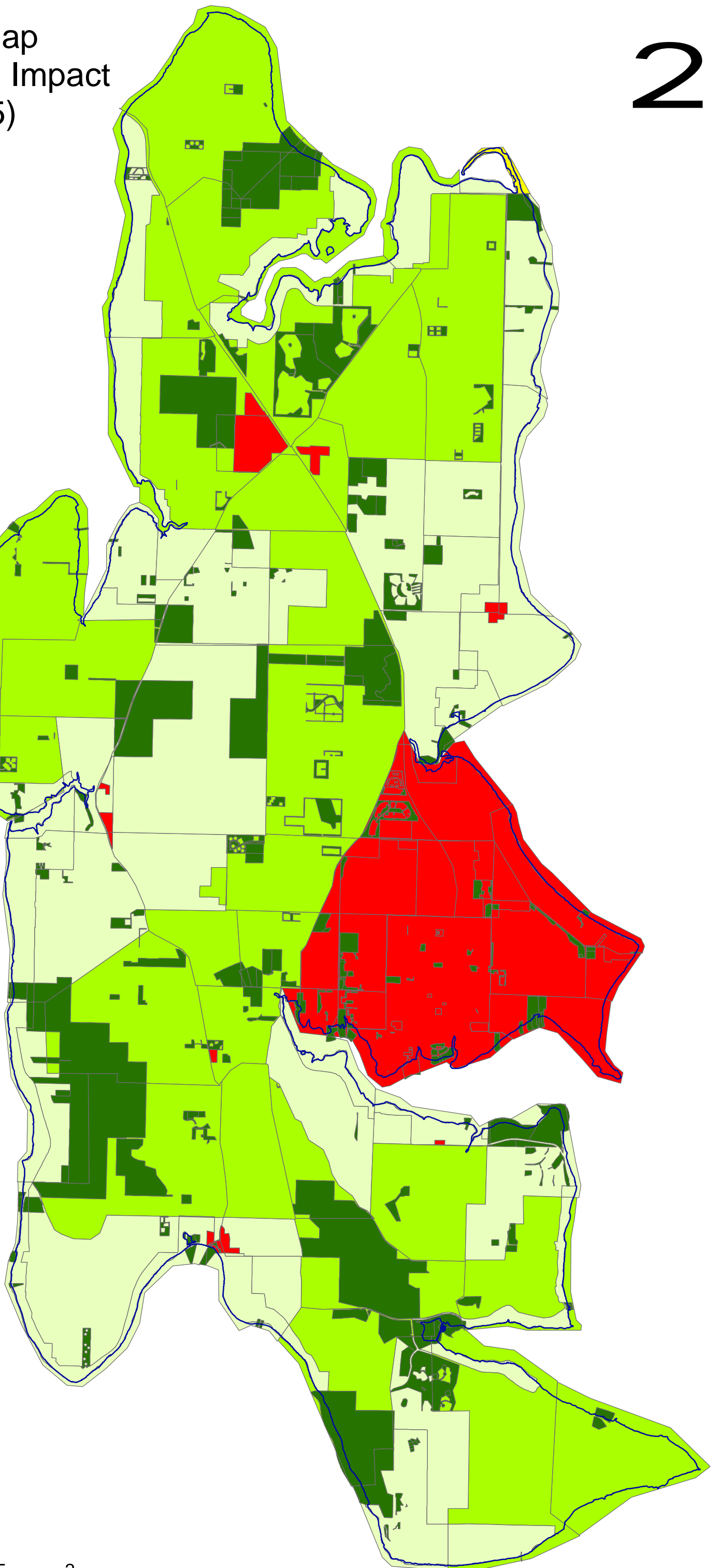
- Dev, High Intensity
- Dev, Low Intensity
- Dev, Med Intensity
- Dev, Open Space
- Protected

0 0.25 0.5 1 1.5 2 Miles

Figure 6:
Land Use Map
Highest Potential Impact
(Year 2035)

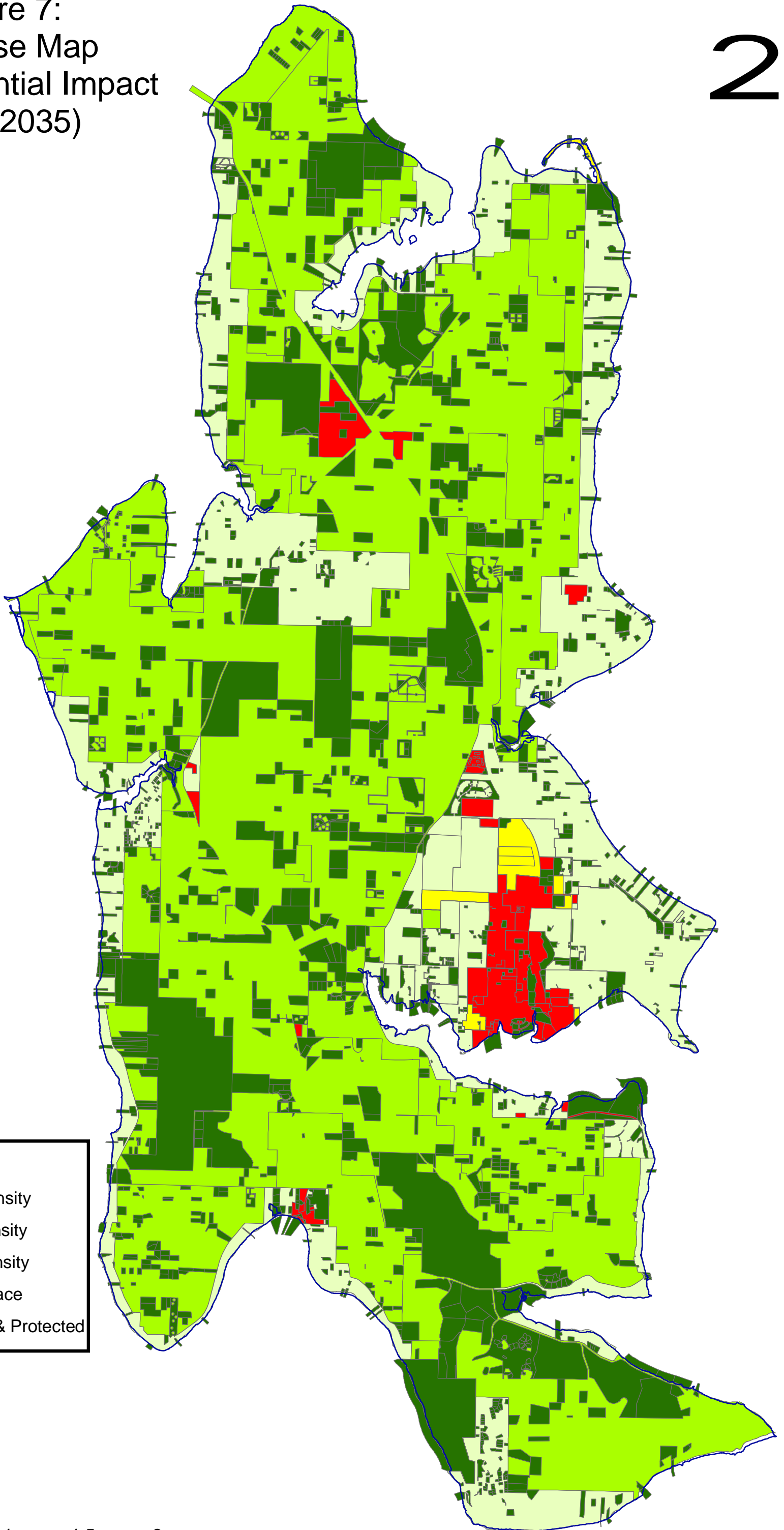
Legend

- Dev, High Intensity
- Dev, Med Intensity
- Dev., Low Intensity
- Dev., Open Space
- Protected



0 0.25 0.5 1 1.5 2 Miles

Figure 7:
Land Use Map
Least Potential Impact
(Year 2035)



Legend

-  Dev, High Intensity
-  Dev, Low Intensity
-  Dev, Med Intensity
-  Dev, Open Space
-  Undeveloped & Protected

0 0.25 0.5 1 1.5 2 Miles